



APPLICATION NOTE

APP #129

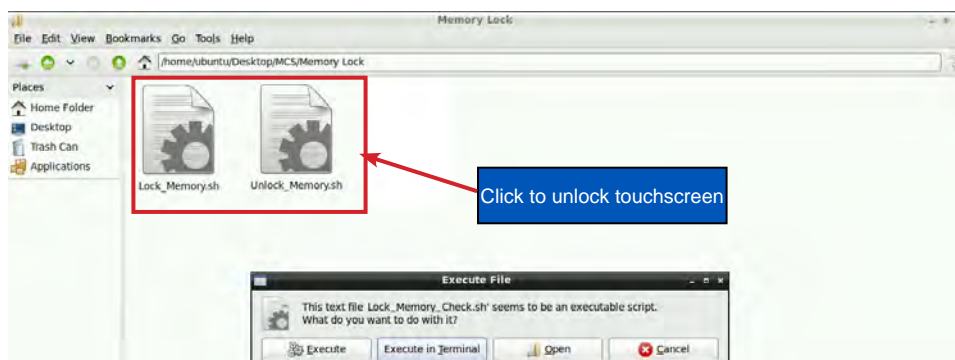
Editing Linux Touchscreen IP Address and Auto Start File

Unlock the Touchscreen

1. Navigate to the 'Desktop', click on 'MCS TOOLS'.



2. Click on the 'Memory Lock folder' screen 1.
3. Double click the 'Unlock_Memory.sh'
4. Click 'Execute'
5. The touchscreen will reboot and show unlocked at the top right corner..

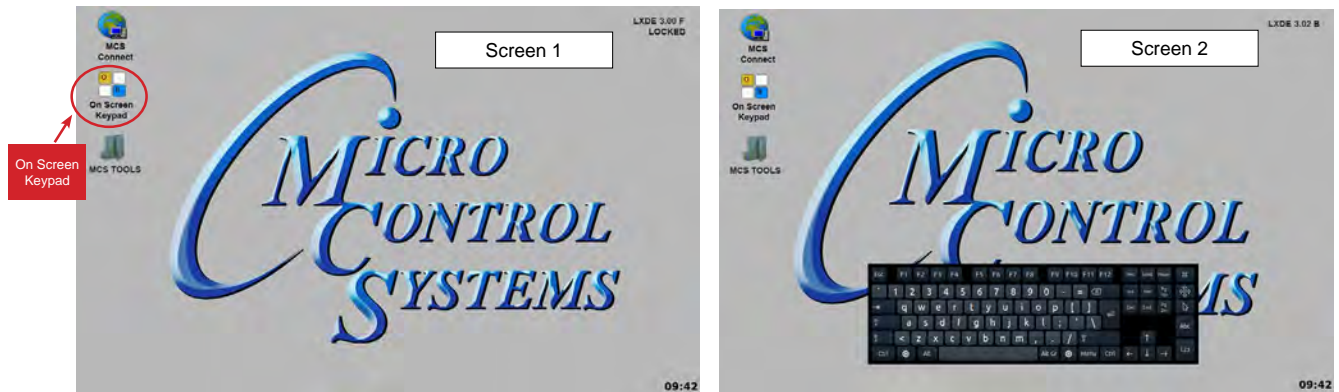


Click to Execute

1. KEYPAD - On the main screen, click on Keypad Icon as shown in screen 1.

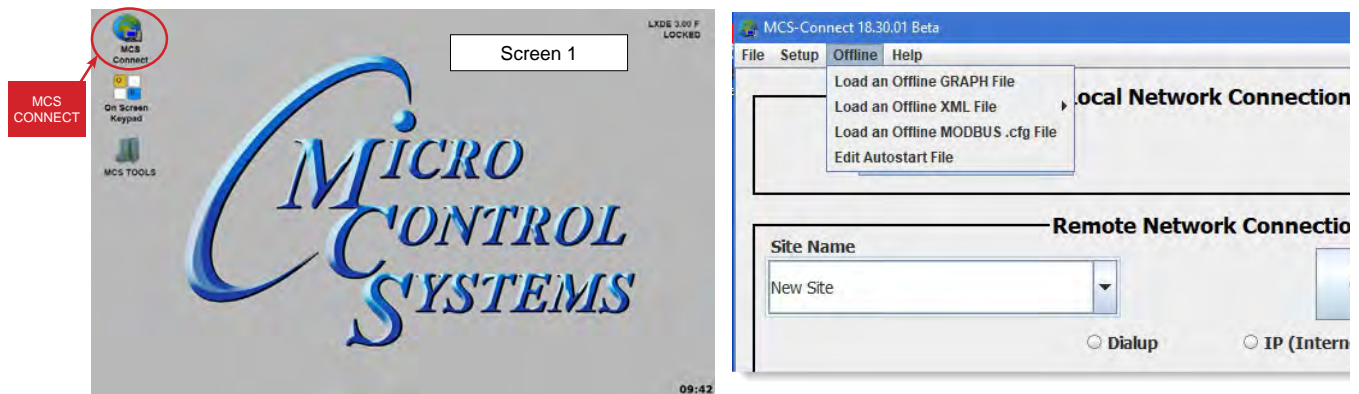
'ON SCREEN KEYPAD'

Screen 2 shows keypad display. Use the stylus and keypad to enter or make adjustments.



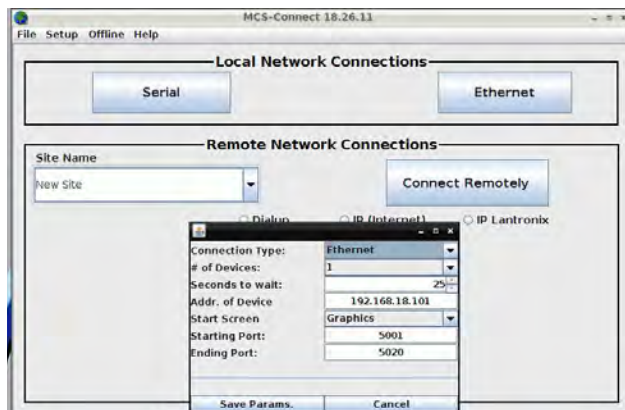
2. Editing the Autostart File

- On the main screen, click on MCS CONNECT
- On MCS CONNECT, click on 'OFFLINE'
- Click on 'Edit Autostart file'



3. Changing the address for the controller.

It is important that you know the IP address for the controller before you can make changes. If you know the address, highlight the 'Addr. of Device' and type in the correct address for the controller. 'SAVE THE PARAMS'



BEFORE MAKING CHANGES TO THE AUTOSTART FILE YOU SHOULD MAKE A BACKUP OF THAT FILE. THE AUTOSTART FILE IS HOW YOUR SYSTEM STARTS EACH TIME IT REBOOTS.

See next page for Descriptions of Arguments that can be changed in the Autostart file.

- Below is a description of the different 'Arguments'.

Descriptions of Arguments that can be changed in the Autostart file: Editing the 'AUTOSTART MCS-CONNECT' file (see corresponding numbers above).

```
Autostart MCS-Connect.desktop
File Edit Search Options Help
[Desktop Entry]
Name=Autostart MCS-Connect
GenericName=Autostart MCS-Connect
Comment=Autostart MCS-Connect
Exec=/home/ubuntu/MCS-Connect/MCS-Connect.sh "ethernet" "1" "25" "192.168.18.101" "graphics" "5001" "5020" "null"
Terminal=false
Type=Application
Icon=
```

- '**Connection Type**' = This argument can be set to "ethernet", "serial", "remote" or "lantronix" depending on the type of connection used to connect to the Magnum.
- '**# of Devices**' = This argument is the number (1-60) of Magnums MCS-Connect is to look for on the network.
- '**Seconds to wait**' = This argument is the time in seconds MCS-Connect waits while searching for the number of Magnums specified in argument 6 before creating an error popup message.
- '**Address of Device**' = This argument is the address of the Magnum that you want to connect to upon auto start. If argument 1 is set to "ethernet" then enter the IP address of the Magnum. Otherwise if argument 1 is set to "serial" then enter the Magnum RS485 address. (on keypad - addresses found under '**SERV TOOLS**' on menu. **MCS-CONNECT**: Connect by 'SERIAL' or 'ETHERNET', address is on right side, SERIAL connection will show the RS485 address only, 'ETHERNET' connection will show the IP ADDRESS and the RS485 address in ().
- '**Start Screen**' = This argument determines which screen MCS-Connect will load on auto-start. There are 3 options: "graphics", "status" or "transmit".
- '**Starting Port**'= If argument #5 is "transmit", this argument is used for the file path of the configuration to transmit. Otherwise, if argument #1 is "remote" or "lantronix" this argument is used to pass in the starting port for these connection types.
- '**Ending Port**' =This argument is only used when argument #1 is "remote" to pass in the ending port for a remote connection.
- Auth. Level** = This argument allows the user to pass in a keyword that starts MCS-Connect with a preset Authorization Level.



APP 126 is available at <http://www.mcscontrols.com/appNotes.html> to set the Graphics Lock feature which ensures that unauthorized users cannot navigate out of the Graphics screen.

Command Line Arguments Explanation

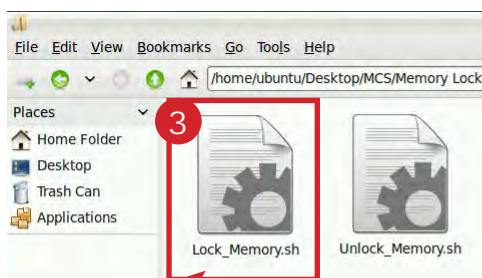
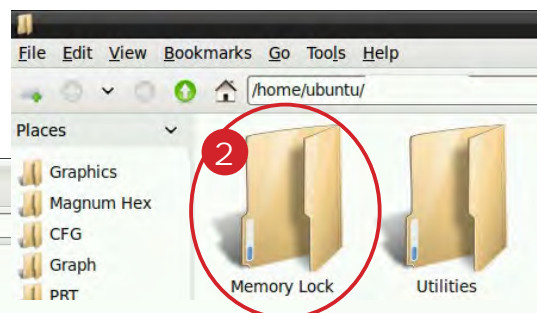
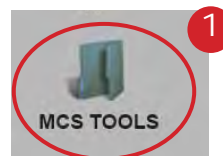
Argument #1	Argument #2	Argument #3	Argument #4
"serial"	# of controllers to look for	# seconds to search	MCS address of controller to connect to
"ethernet"	# of controllers to look for	# seconds to search	IP address of controller to connect to
"remote"	# of controllers to look for	# seconds to search	IP address of controller to connect to
"lantronix"	# of controllers to look for	# seconds to search	IP address of controller to connect to

Argument #5	Argument #6	Argument #7	Argument #8
graphics"/"status"/"transmit"	null/null/cfg file address	null	Desired Auth Level code word
graphics"/"status"/"transmit"	null/null/cfg file address	null	Desired Auth Level code word
"graphics"/"status"	starting port	ending port	Desired Auth Level code word
"graphics"/"status"	starting port	null	Desired Auth Level code word

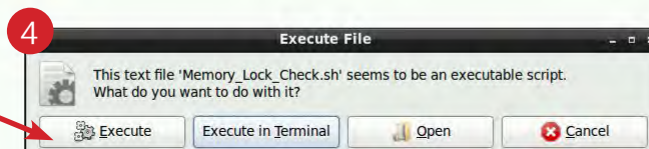
Re-Locking Touchscreen



1. Double click the 'MCS TOOLS' Icon on the Desktop.
2. Double click 'Memory Lock' sub directory.
3. Double click 'Lock Memory'.
4. Click 'EXECUTE'. The touchscreen will reboot.



Click to LOCK touchscreen
Click to Execute



Revision History

Date	Author	Description
10-19-17	DEW	Setup from Touchscreen Manual
09-30-19	DEW	edits made as per Bret
04-8-2020	DEW	combine APP 129 AND 127 as per Bret
06-30-2020	DEW	Make changes to APP 129

Any questions regarding this release, contact: support@mcscontrols.com
Micro Control Systems, Inc. 5580 Enterprise Parkway Fort Myers, Florida 33905
(239)694-0089 FAX: (239)694-0031 www.mcscontrols.com

Information contained in this document has been prepared by Micro Control Systems, Inc. and is copyright © protected 2020. Copying or distributing this document is prohibited unless expressly approved by MCS.